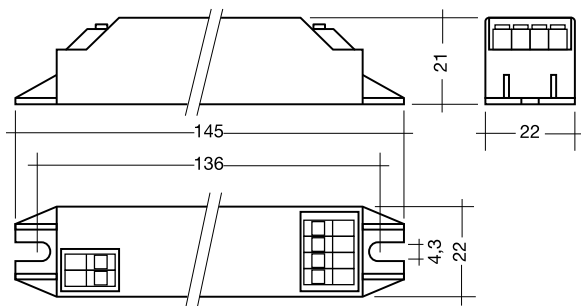


## PC Basic sl 8 W 220–240 V 50/60/0 Hz, non dimmable



- defined lamp warm start < 1 s
- switching cycles > 25.000
- average life = 50.000 h  
(at ta max. and a failure rate of ≤ 0.2 % per 1.000 h)
- AC voltage range 198–264 V
- DC voltage range 176–264 V  
(lamp start ≥ 198 VDC)
- overvoltage protection 270 VAC, 360 h

- operating frequency ≥ 40 kHz
- wide operating temperature range from -25 °C to +60 °C
- suitable for use in emergency lighting installations in accordance with VDE 0108
- safe switch off of defective lamps
- safe shutdown of lamps at end of life
- automatic re-start after lamp change
- thermal protection according EN 61347-1

**Packaging:**  
25 pieces/carton  
36 carton/palett  
900 pieces/palett

**Certified:**  
EN 55015  
EN 60929  
EN 61000-3-2  
EN 61347-2-3  
EN 61347-2-4  
EN 61547  
**according to VDE 0108**

Lamp		Ballast													
watt- age W	type	type	article number	LxWxH mm	fixing centres D mm	weight g	lamp power W	circuit power W	Celma class EEL	current at 50 Hz 220 V A	240 V A	λ at 50 Hz 220 V	240 V	tc point °C	temperature range °C
8	T5	PC 1x8W Basic sl	22176026	145x22x21	136	55	6.8	8.7	A2	0.075	0.071	0.53	0.51	80	-25 → +60

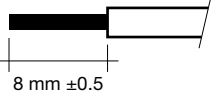
**Installation instructions**

**Wiring type and cross section**

The wiring can be in flexible cable with ferules or solid with a cross section of 0.5–1.5 mm<sup>2</sup>. Strip 9.5 mm of insulation from the cables to ensure perfect operation of push-wire terminals.

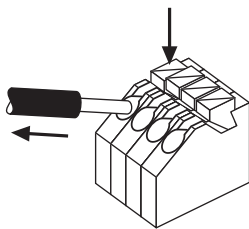
**wire preparation:**

0.5 – 1.5 □



**Release of the wiring**

Press down the “push button” and remove the cable from front.



**Wiring advice**

The lead length is dependent on the capacitance of the cable.

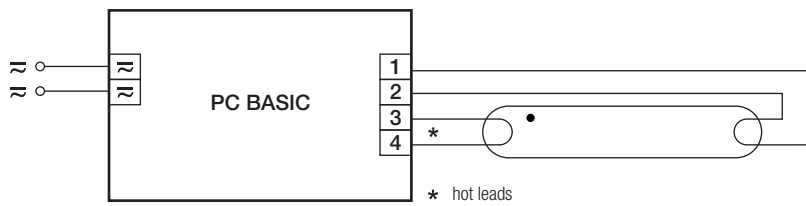
Ballast Type	Terminal		Maximum capacitance allowed	
	Cold	Hot	Cold	Hot
PC 1x8W Basic sl	1, 2	3, 4	120 pF	60 pF

With standard solid wire 0.5/0.75 mm<sup>2</sup> the capacitance of the lead is 30–80 pF/m. This value is influenced by the way the wiring is made.

Lamp connection should be made with symmetrical wiring.

To avoid the damage of the control gear, the wiring must be protected against short circuits to earth (sharp edged metal parts, metal cable clips, louver, etc.).

**Circuit diagramm PC Basic sl**



\* leads 3, 4 max. 0.5 m (< 60 pF)  
leads 1, 2 max. 1.0 m (< 120 pF)

**RFI**

TridonicAtco ballasts are RFI protected in accordance with EN 55015. To operate the luminaire correctly and to minimise RFI we recommend the following instructions:

- Connection to the lamps must be kept as short as possible
- Mains leads should be kept apart from lamp leads (ideally 5–10 cm distance)
- Do not lead mains leads too closely along the electronic ballast
- Keep the distance of lamp leads from the metal work as large as possible
- Mains wiring to be twisted when through wiring
- Keep the mains leads inside the luminaire as short as possible

**AC operation**

Mains voltage:

220–240 V 50/60 Hz

198–264 V 50/60 Hz including safety tolerance (±10 %)

202–254 V 50/60 Hz including performance tolerance (+6 % / -8 %)

Min. lamp starting temperature -15 °C

**DC operation**

220–240 VDC

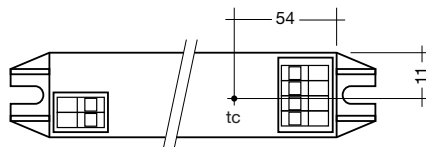
198–264 VDC certain lamp start

176–264 VDC operating range

Min. lamp starting temperature -15 °C

**Temperature range**

from -25 °C to +60 °C



**Ingress protection**

IP 20 for boxed versions

**Protection class**

The ballasts are suitable for use in class I or class II luminaires.

**Abnormal operation protection**

All ballasts are equipped with a protection circuit against abnormal operation. The circuit is used to shut down the ballast if the lamp fails to strike, or if the lamp is defect.

The ballast can be restarted after shut down by turning off the supply for 10 seconds or by replacing the lamp.

**Harmonic distortion in the mains supply**

EMC standard EN 61000-3-2 for lighting equipment with active input power ≤ 25 W.

All ballasts comply with the standard EN 61000-3-2 to operate lighting equipment with an active input power ≤ 25 W where distortion limits for current drawn from the supply are 86 % for 3<sup>rd</sup> harmonic and 61 % for 5<sup>th</sup> harmonic only.

**Remark**

The EMC standard applies to the luminaire and reflects the specific properties of each fitting whether single or multi-lamp.

**Ballast lumen factor**

BLF = 1.00 (at 230 V 50 Hz)

**Loading of automatic circuit breakers**

Automatic circuit breaker type	B10	B13	B16	B20	C10	C13	C16	C20
Installation ∅	1.5 mm <sup>2</sup>	1.5 mm <sup>2</sup>	1.5 mm <sup>2</sup>	2.5 mm <sup>2</sup>	1.5 mm <sup>2</sup>	1.5 mm <sup>2</sup>	1.5 mm <sup>2</sup>	2.5 mm <sup>2</sup>
PC 1x8W Basic sl	80	179	221	276	138	179	221	276

Max. load per MCB at supply voltage U<sub>n</sub> = 230 V