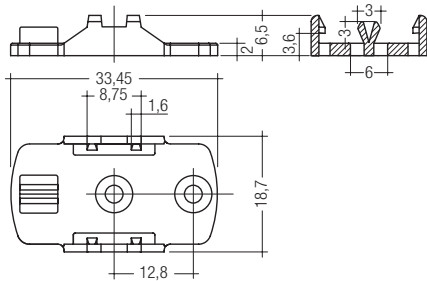


TALEX Z161 FIXING PLATE RZ
Fixing plate

RoHS



Mounting

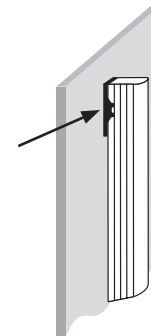
- Fixing plate with stud to prevent TALEX profiles sliding if mounted vertically
 - Metric M 2.5 screws or self-tapping screws with a diameter of 2.2 to 2.9 mm and a screw head height of no more than 2.2 mm are recommended for mounting the fixing plate.
- E.g. screws from Bossard (www.bossard.com):
metric M 2.5/Torx (BN6404) or self-tapping screws
Ø 2.2/Torx (BN13274)

TALEX type	article number	material	colour	dimensions (LxWxH) mm	weight/piece g	packing unit
Z161 FIXING PLATE RZ	88166859	PMMA	white	33.45x18.7x6.5	1	100

Number of Z161 RZ fixing plates required

Type	horizontal	vertical ①	overhead
LE600	2	2	2
LE1000	2	2	2
LE1200	3	3	3
LE1500	3	3	3

① Z161 RZ at the top of TALEXengine Line: the stud on the end cap prevents the unit sliding down.



The fixing plate must not be subjected to any further mechanical stresses. If this cannot be guaranteed (because of vibrations for example) it may become detached and must therefore be secured with additional fastenings.

