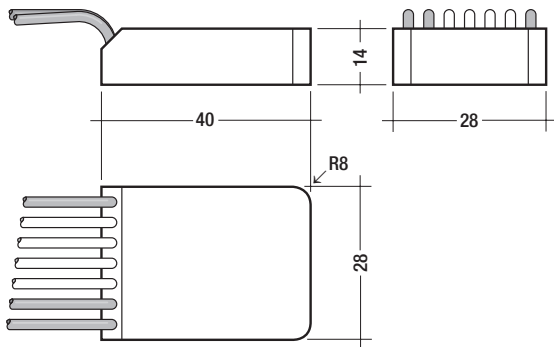


DALI MC

Control module with four freely programmable inputs



On the extremely compact DALI MC multi-controller the functions can be assigned to each of the four switch inputs.

The following functions are available: dim up, dim down, off, recall min., recall max., goto scene 1-16, direct arcpower ...%, mask, predefined macros.

Via the settable switching modes (short, long press; toggle; signal edge controlled relay mode) a maximum of two options can be assigned to each input, of which one function can be activated in each case.

With the DALI MC it is possible to set individual addresses 1-64 or groups 1-16 or "broadcast" as the destination.

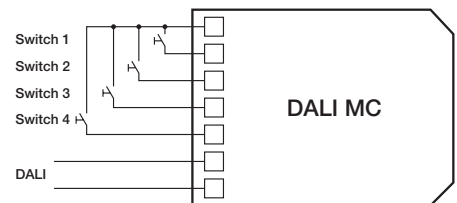
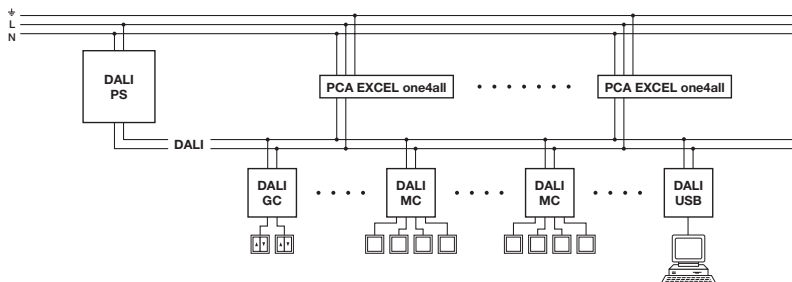
The "MasterCONFIGURATOR" (from V1.10) software needed for programming is available for download free of charge. Further information about the programming can be found in the manual of the DALI MC. For more information go to www.tridonicatco.com.

The DALI MC also has an adjustable "power up" function. In other words, on power-up (e.g. after a power failure) a user-defined command is sent after a delay (off, goto scene 1-16)

Packaging:
single pack
1 piece

Certified:
EN 55 015
EN 61 347-1
EN 61 347-2-11
EN 61 547

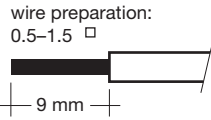
type				DALI MC
article number:				86458507
supply:	-			via DALI signal line
current	-	mA	-	6
input	-	-	-	4 switches or relays
output	-	-	-	DALI
funktion	-	-	-	programmable
temperature	permitted ambient temperature	°C		0 → +50
ingress protection	-	-		IP 20



Wiring type and cross section:

The wiring can be solid wire or stranded wire with a cross section of 0.5 mm² to 1,5 mm².

The maximum wiring-length between the DALI MC and momentary switches is 50 cm. connecting wires are enclosed in the packaging.



Installation:

- The DALI MC can be inserted into the mounting box for the momentary switch.
- The DALI MC must not be connected to the mains. It is supplied directly via the DALI signal line.
- The momentary switches are connected directly to the DALI MC (potential free contacts) and must not be connected to the mains.
- DALI signals are not SELV. Therefore the same procedures should be applied as working with mains voltage.
- DALI MC modules allow multi master operation. Multiple control modules can be used on the same comfortDIM DALI network.

Default settings:

	input 1	input 2	input 3	input 4
address	broadcast	broadcast	broadcast	broadcast
function	brief press: switch on to max. long press: dim up	brief press: switch off long press: dim down	Recall Scene 1	Recall Automatic DALI MSensor

definition depress time:

brief press momentary switch 40–600 ms
long press momentary switch >600 ms